



# Marina Technology

Infrastructure

Products

Services

# Brochure 2024

# Contents

1. Products .....	3
2. Services .....	11
3. Infrastructure building .....	21
4. References .....	22



# 1. Products

## 1.1. Electricity and water supply pedestals

### Balaton M

Smart pedestal



long-lasting materials  
durable structure  
timeless functional design  
custom colours available (RAL)





# Colonne

## Smart pedestal



long-lasting materials  
durable structure  
modern and elegant design  
custom colours available (RAL)

This pedestal's design was created in collaboration with Adam Miklosi, Reddot award-winner designer.







## Features of our pedestals:

- Durable structures made of special non-corrodabe aluminium alloy to withstand elements by the sea
- Premium powder coating (austrian and swiss materials)
- Waterproof (up to IP67)
- 10 years structural warranty
- 3-5 years complete warranty
- Up to 6 pcs of electric outlets per pedestal
- End-point connections up to 320 A
- Drinking water and greywater supplies (2 taps per pedestal)
- Automatic lighting (options for timing, dimming, and exclusion)
- Automatic pump control, with outlets (water-circulation system for winter berthing)
- Fittings and fastenings only in stainless steel
- Humidity and temperature sensor within pedestals
- Sabotage-control
- Remote controlling and real-time monitoring of pedestal's activities and supply data
- Overvoltage protection (on demand)

## 1.2. Outdoor lighting

### Conic 130

Waterproof deck and wall light (semi-recessed)



#### LED light source

natural colour temperature (3300 K)

optional colour temperatures on demand

remote controlling and dimming

long-lasting, load-resistant, solid aluminium casting

waterproof (IP68)

special edition: custom logo insert can be added

min. 50 000 h lifetime

This product's design is protected by EUIPO.

## 2. Services

### 2.1. Complex Marina Management

- A) Marina Manager
- B) Marinero App
- C) Support
- D) Integration into existing ERP systems
- E) Scheduled administrative information

### 2.2. Operative Support

- A) Maintenance
- B) Installation and revision
- C) Service support

### 2.3. Planning

- A) Electric power networks
- B) Info-communication networks
- C) Water supplies

## 2.1. Complex Marina Management

Smart metering, controlled consumption, remotely controlled and automatic lighting systems, booking, payments, billing, and more, all in one place. Possibility to integrate into existing enterprise resource planning (ERP) systems.

### A) Marina Manager

The control center of the marina, where a wide range of operational and management functions are available:

- Complete database of the marina (registered boats and users)
- Berth management
- Automatic booking management (booking, check-in, payment based on consumption, check-out, billing)
- Real-time status map of marina (manually customizable)
- Real-time consumption monitoring of permanent and guest boats, pedestals
- Remote controlling of consumptions (start and terminate charging)
- Administration of RFID keys for local manual operation
- Administration and billing of annual or seasonal contracts
- Automatic lighting across the marina: timing, dimming, on/off switching, night functions, area exclusions, and other special modes
- Automatic water circulation system (winter berth)
- Notification settings per user, per groups, per marina, for all users
- Foreign languages
- Audit log
- Separate entitlement levels to access marina management features (Owner/ director, harbourmaster, staff, etc.)
- Statistics

- Overview
- Billing
- Dashboard
- Lighting
- Defrosting
- Marina data
- Boats
- Pricing
- Permanent berths
- Guest berths
- Transactions
- Pedestals



Screenshot: Marina Manager, map view

**HU/BFYC/M3\_3** ONLINE

Defrosting: OFF

Lamp 1: 0%

Lamp 2: 0%

Electricity - Socket 1	E9 - Hangover	Electricity - Socket 2	E8 - Kalimera
UNPLUGGED OFF	User: -	PLUGGED ON	User: 15:5F
Meter reading: 1175.284 kWh	Meter reading: 1175.284 kWh	Meter reading: 1757.071 kWh	Meter reading: 1757.071 kWh
Voltage: 247.2 V	Voltage: 247.2 V	Voltage: 248 V	Voltage: 248 V
Amperage: 0 A	Amperage: 0 A	Amperage: 0.71 A	Amperage: 0.71 A
Efficiency: 0 W	Efficiency: 0 W	Efficiency: 30.3 W	Efficiency: 30.3 W
Cosfi: 1	Cosfi: 1	Cosfi: 0.1775	Cosfi: 0.1775
Electricity - Socket 3	E10 - ELLBy	Electricity - Socket 4	-
PLUGGED ON	User: 7F:D	UNPLUGGED OFF	User: -
Meter reading: 1553.001 kWh	Meter reading: 1553.001 kWh	Meter reading: 1299.987 kWh	Meter reading: 1299.987 kWh
Voltage: 248 V	Voltage: 248 V	Voltage: 246.8 V	Voltage: 246.8 V
Amperage: 0.69 A	Amperage: 0.69 A	Amperage: 0 A	Amperage: 0 A
Efficiency: 27.2 W	Efficiency: 27.2 W	Efficiency: 0 W	Efficiency: 0 W
Cosfi: 0.1634	Cosfi: 0.1634	Cosfi: 1	Cosfi: 1
Electricity - Socket 5	E12 - Zenit	Electricity - Socket 6	E7 - Daiquiri
PLUGGED ON	User: 81:D	UNPLUGGED OFF	User: -
Meter reading: 388.748 kWh	Meter reading: 388.748 kWh	Meter reading: 720.907 kWh	Meter reading: 720.907 kWh
Voltage: N/A	Voltage: N/A	Voltage: 247.7 V	Voltage: 247.7 V
Amperage: N/A	Amperage: N/A	Amperage: 0 A	Amperage: 0 A
Efficiency: N/A	Efficiency: N/A	Efficiency: 0 W	Efficiency: 0 W
Cosfi: N/A	Cosfi: N/A	Cosfi: 1	Cosfi: 1

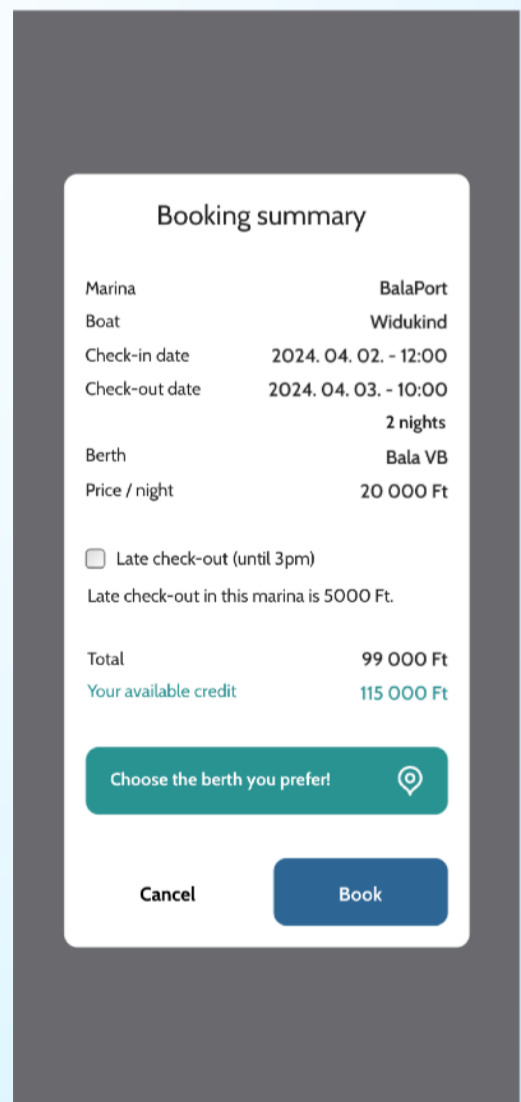
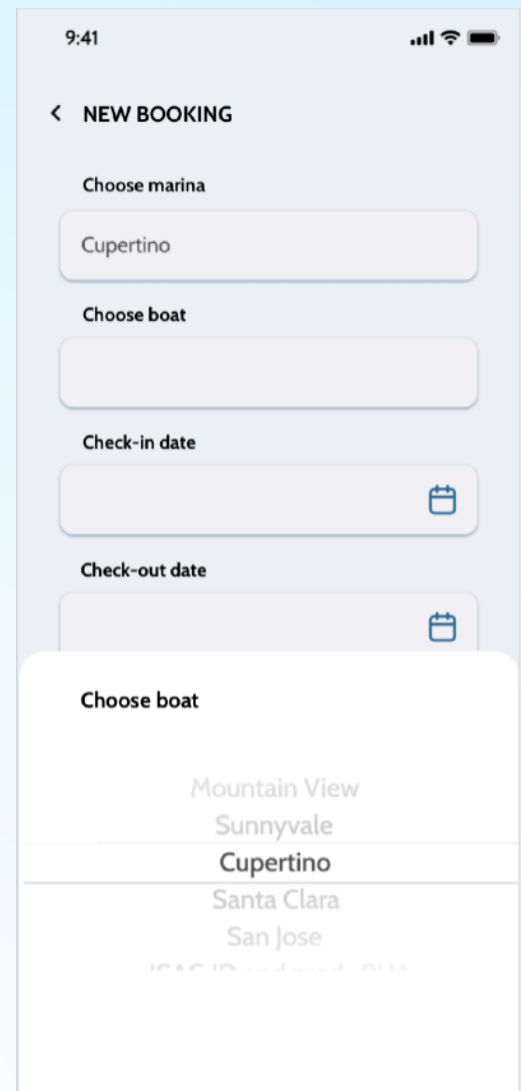
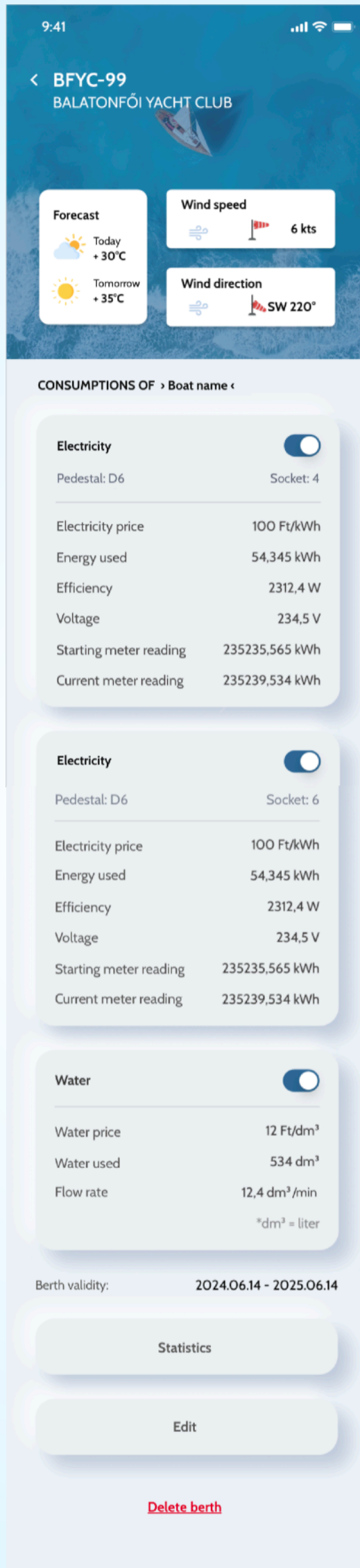
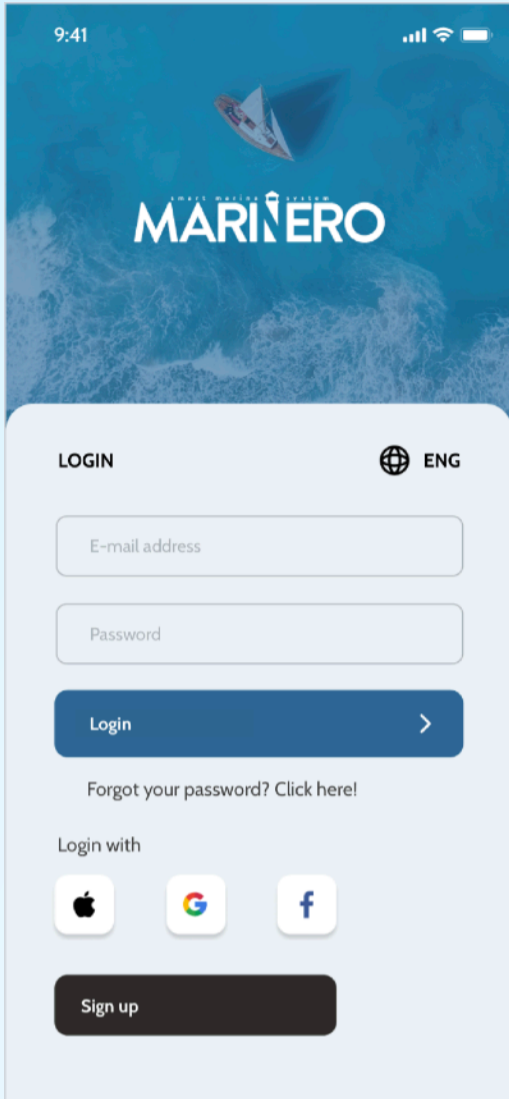
Screenshot: Marina Manager, map view - pedestal details

## 2.1. Complex Marina Management

### B) Marinero App

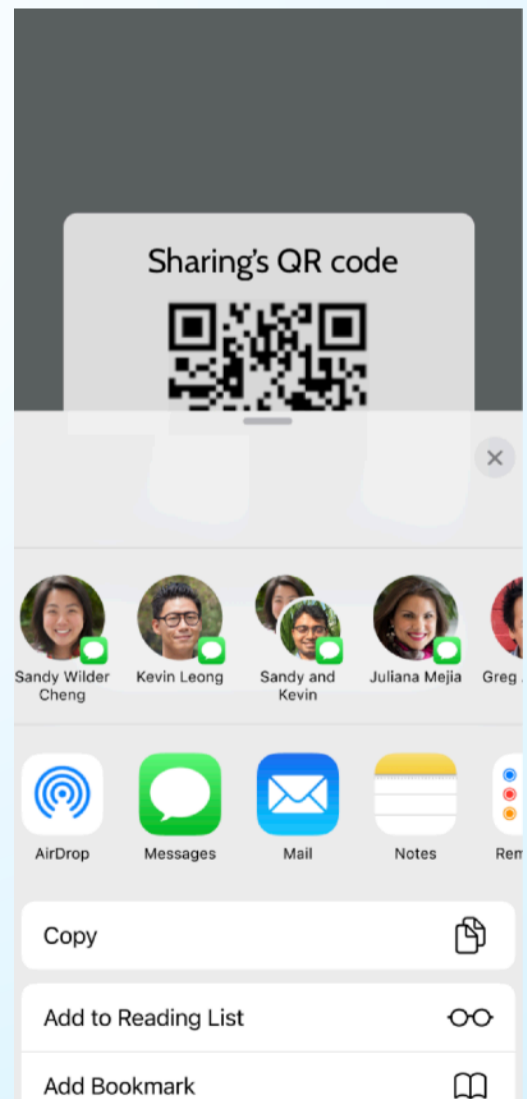
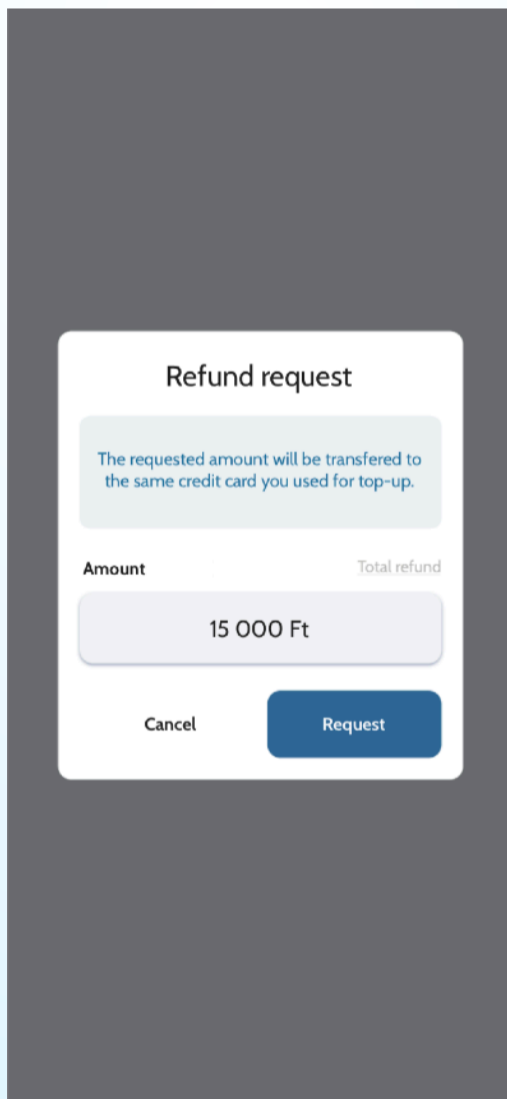
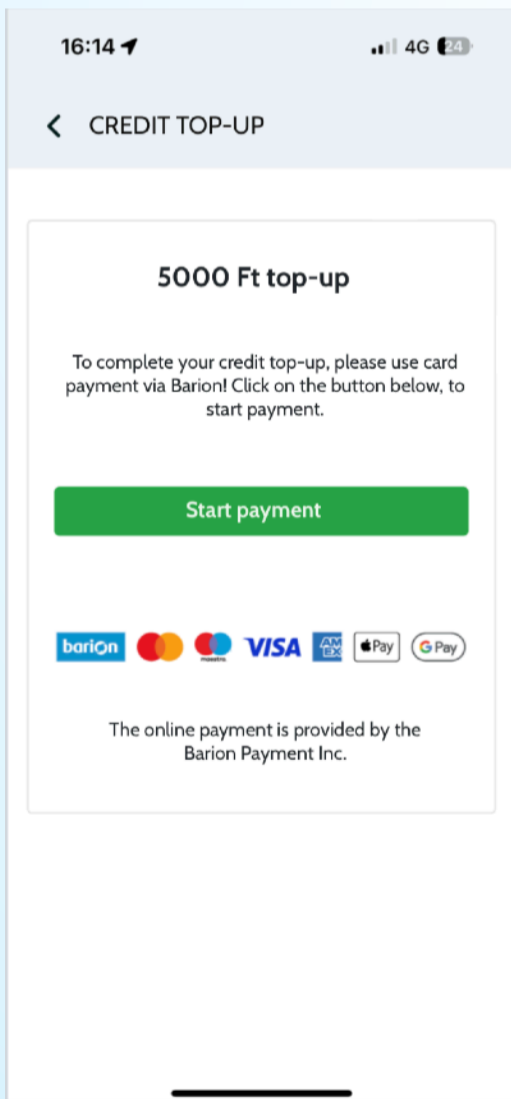
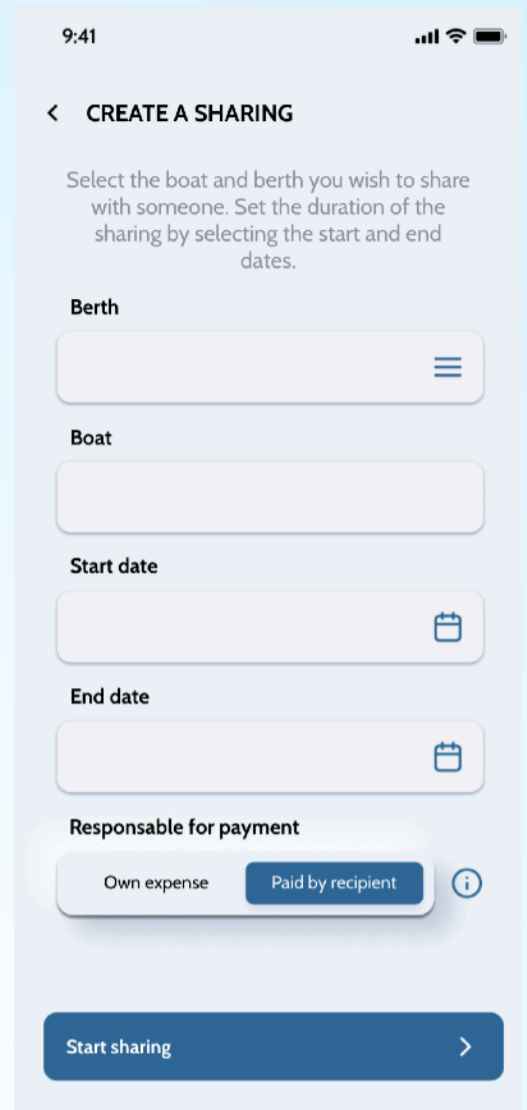
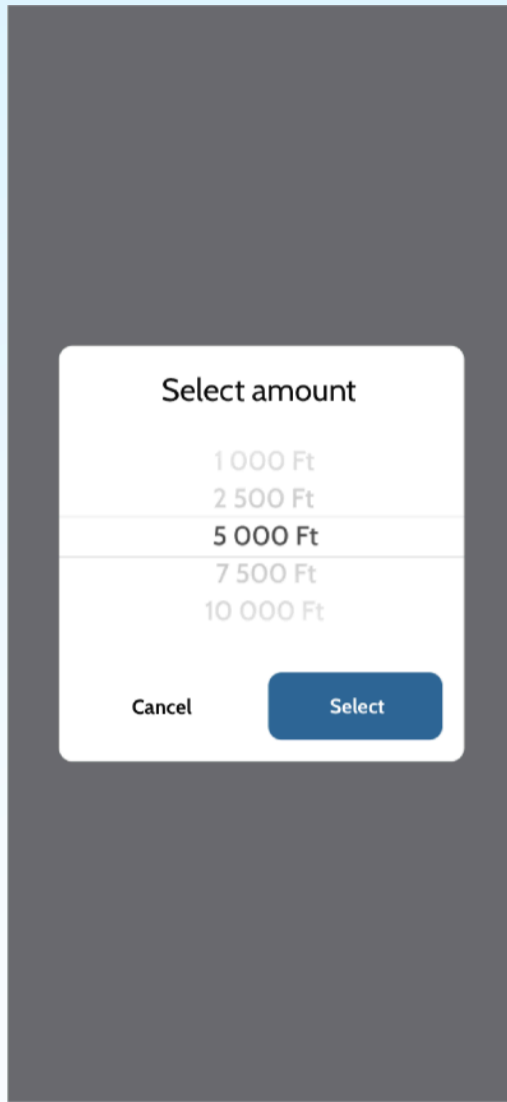
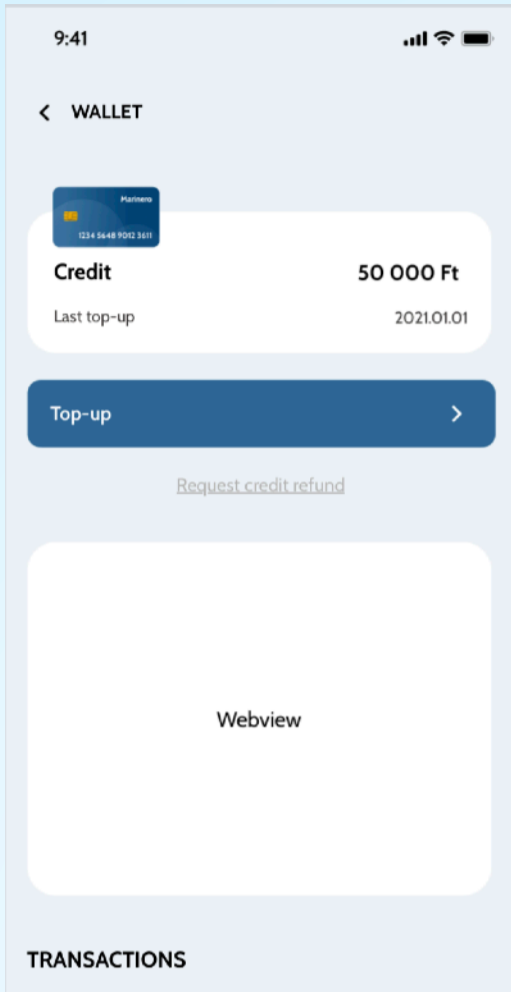
The control center of boat owners on Android and iOS.

- Boaters and boat owners register with a few personal details, to create a user profile
- Each boat has its own berth assigned, based on registered parameters (draft, length, beam, etc)
- Boat's consumption is monitored and controlled real-time
- Start and terminate charging directly from the App
- Remote booking of guest berths in other marinas
- Payments after consumptions and other marina services are carried out through the App, using Marinero Wallet
- Immediate credit top-up for transactions
- Weather and wind information from the marina
- Billing settings (personal and business)
- Share the controlling of your boat, for a selected period of time (e.g. with family and friends)
- Guest user can take on boat's consumption costs during sharing
- Notifications (e.g. charging interrupted, boat licence expires, etc.)
- Help, contact via the App
- Foreign language options
- Choose from a range of App themes
- Pro version: 'Boat Truster' function, including real time status information of vessel, e.g. position, SOG, temperature inside cabin, door sabotage, smoke alarm, fuel level, water tank level, and more (built-in device is required)



Screenshots: Mariner App





Screenshot: Marinero App

## 2.1. Complex Marina Management

### C) Support

Remote support on telephone and in writing

- Ticket system to track and solve possible bugs and issues
- Remote help through telephone for both marina personnel and boaters

### D) Integration into existing ERP systems

- We provide custom-made APIs for data transmission, for operators that already have a corporate ERP platform

### E) Scheduled administrative information

- Scheduling information for administrative purposes (e.g. consumption figures, billing data, etc) are set to custom needs
- Consumption statistics
- Statistics on bookings and guest consumptions
- Info-communication network statistics
- Entry statistics (entries to marinas, pontoons, etc.)
- Surveillance systems statistics

## 2.2. Operative Support

### A) Maintenance

- Periodic and occasional check-ups
- Repairs

### B) Commissioning and review

- First electrical safety compliance inspection and commissioning
- Periodic inspections

### C) Service

- We keep an extensive stock of materials, components and fittings for possible repairs, vis maior situations (e.g. boat hits pedestal)

## 2.3. Planning

### A) Electric power networks

- Preparation of electrical design plans, sizing of power transmission networks with high industry experience, in compliance with marina industry standards.

### B) Info-communication networks

- Weak-current structured networks
- Wireless Internet networks, coverage planning
- CCTV systems
- Operational and configuration planning

### C) Water supplies

- Drinking water networks
- Grey water networks
- Black water drainage systems

## **3. Construction**

### **3.1. Low and medium voltage electricity networks**

### **3.2. Structured Info-communication networks**

Copper and optical fibre networks

### **3.3. Surveillance and image recording systems**

### **3.4. Wireless internet access networks**

### **3.5. Drinking water systems**

### **3.6. Grey water systems**

### **3.7. Installation of waste water disposal equipment**

### **3.7. Water circulation system for winter berthing**

### **3.7. Installation and commissioning of pedestals**

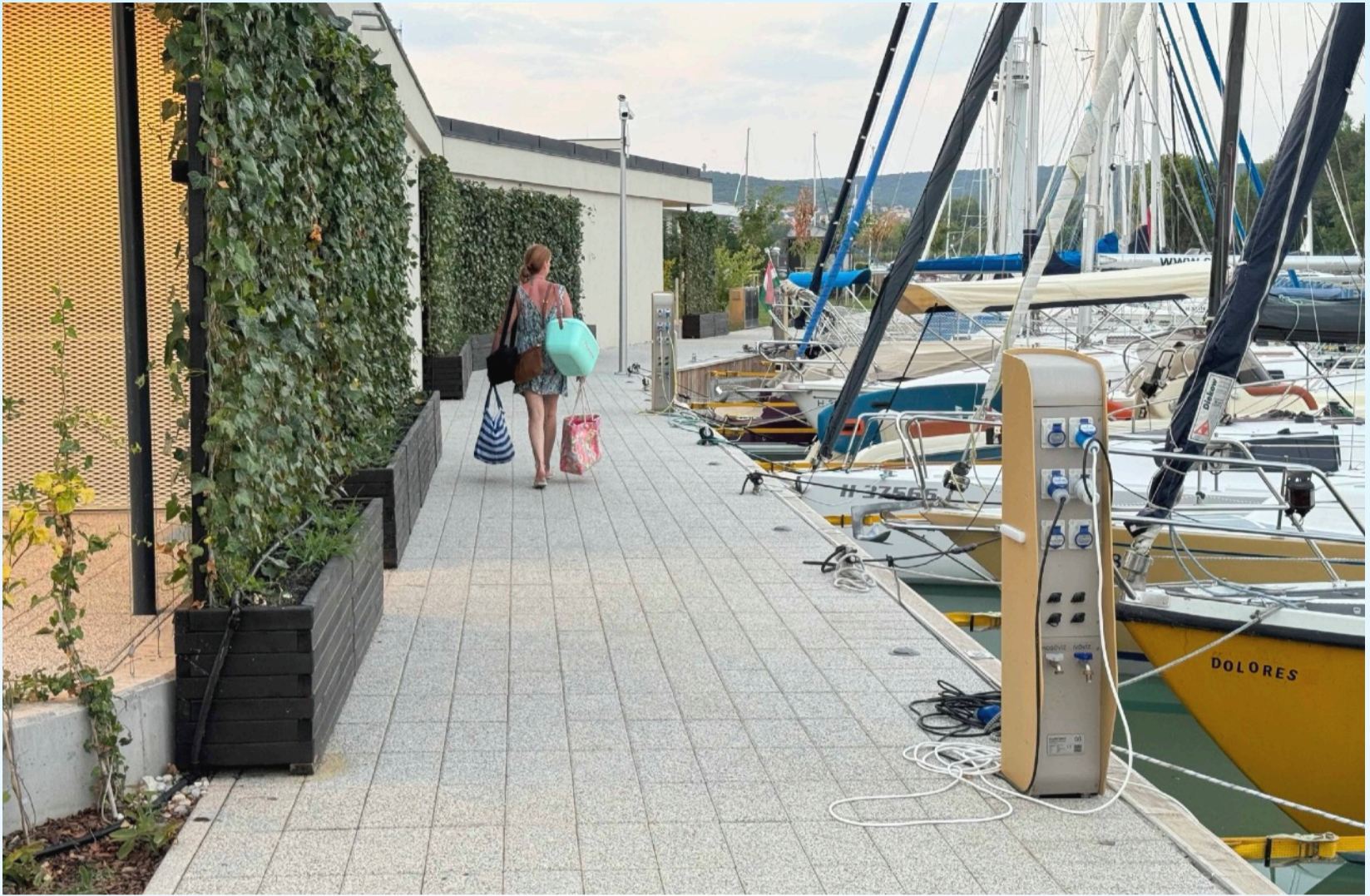
### **3.7. Outdoor lighting systems**

# 4. References

## 4.1. Ypsilon Yacht Club

Marina, Alsóörs, Lake Balaton

- Design and construction of low voltage electrical network
- Design and construction of drinking water supply system
- Design and construction of grey water system
- Design and construction of security camera system
- Design and construction of wireless internet network
- Design and construction of weak-current structured network
- Design and construction of lightning current arrester system
- Construction of complete low-voltage electrical network
- Construction of complete water supply system
- Automatic booking system for guest berths
- Automatic water circulation system (winter berthing)
- Manufacturing and installation of 'Colonne' smart pedestals (90 pcs)
- Manufacturing and installation of 'Conic 130' waterproof outdoor deck lights (270 pcs)
- Automated outdoor lighting system, controlled from Marina Manager
- Port entrance lights
- Other navigation lights
- Manufacturing and installation of main power distribution and sub-distribution cabinets (stainless steel)
- Smart marina management system (Marina Manager, Marinero App)
- Administrator services
- First electrical safety compliance inspection
- Commissioning of complete electrical network

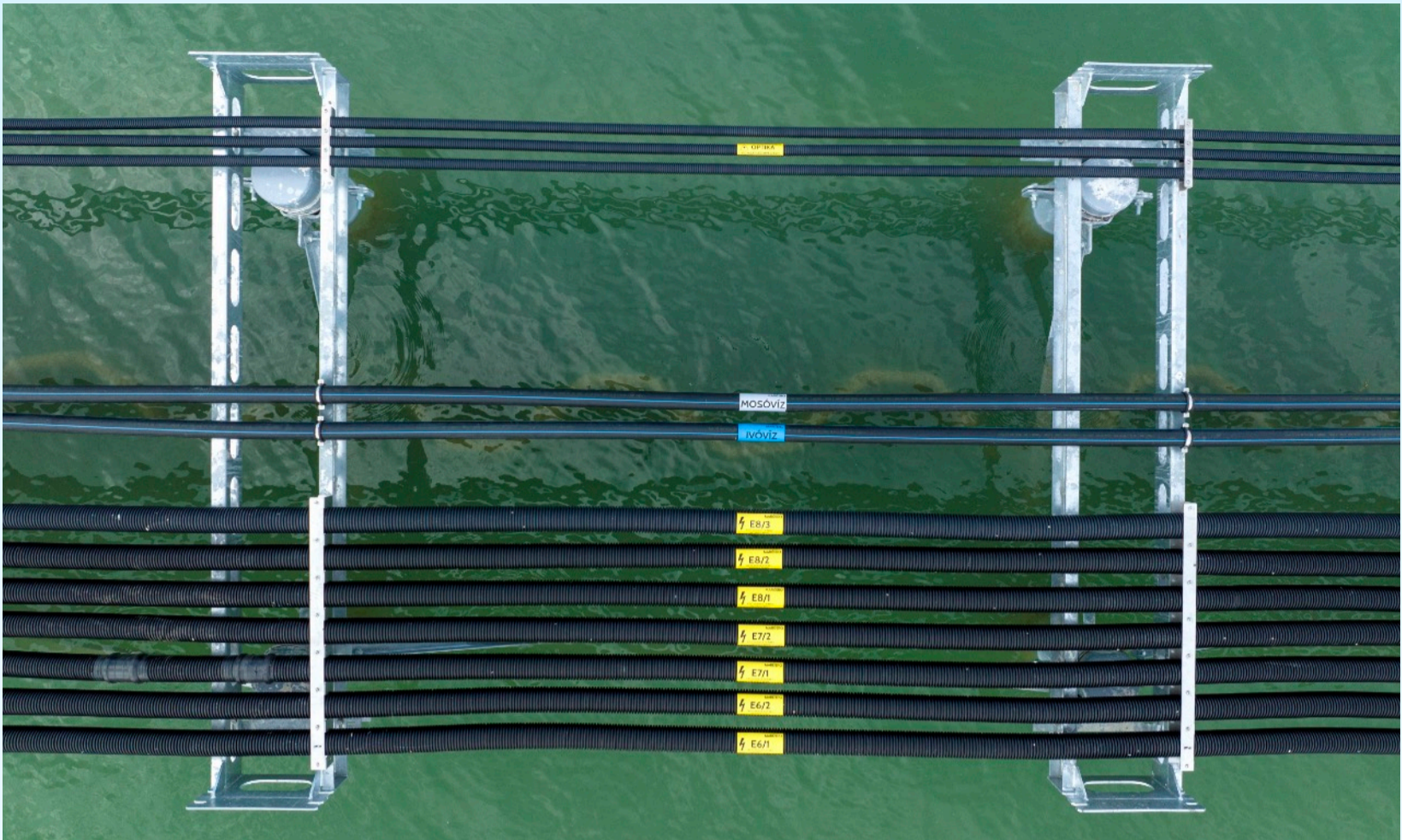












## 4.2. Balatonfői Yacht Club

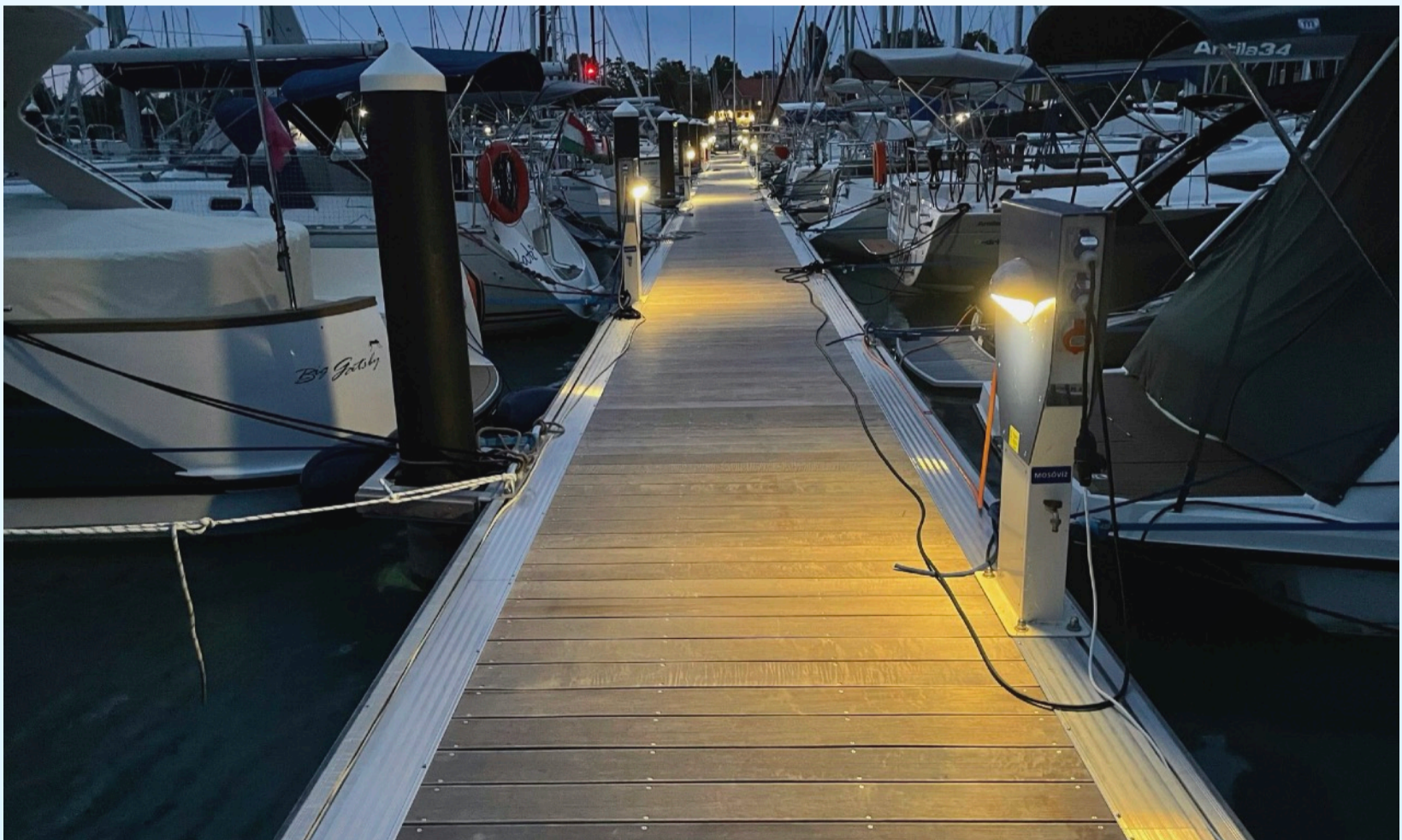
Marina, Lake Balaton, Hungary

- 'Balaton M' smart pedestals
- Automated outdoor lighting system, controlled from Marina Manager
- 'Conic 130' waterproof outdoor deck lights
- Port entrance lights
- First electrical safety compliance inspection
- Commissioning of electrical power network
- Marina operation and management services (Marina Manager, Mariner App)









## 4.3. Almádi Yacht Club

Marina, Lake Balaton, Hungary

- Modernization of the entire marina's electrical network
- 'Balaton M' smart pedestals
- Ethernet network
- Overvoltage protection system
- Renovation of main power distribution cabinet
- Customized, scheduled administrative information services
- RFID keys
- Electrical safety compliance inspection







## 4.4. Fertőrákos

Marina, Neusiedler See, Hungarian side

- Planning and building of electrical power network
- Planning and building of water supply network
- More than 230 pedestals





## 4.5. Icici, Croatia

Outdoor lighting of residential building

- Building electrical networks
- More than 100 pcs of 'Conic 130' outdoor decklights







## 4.6. BalaPort

Marina, Balatonfüred, Lake Balaton

- 'Balaton M' smart pedestals
- Automated outdoor lighting system, controlled from Marina Manager
- 'Conic 130' waterproof outdoor deck lights
- First electrical safety compliance inspection
- Commissioning of electrical power network
- Marina operation and management services (Marina Manager, Mariner App)
- Automatic booking system for guest berths
- Automatic water circulation system for winter berthing









## 4.7. UNI

### Marina, Balatonfüred, Lake Balaton

- Design of low and high voltage electrical networks
- Design of drinking water supply system
- Design of grey water system
- Design of black water drainage system
- Design of security camera system
- Design of wireless internet network
- Design of weak-current structured network
- Replacement of medium-voltage switchgear
- Installation and commissioning of 1 MVA transformer station (concrete housing)
- Construction of complete low-voltage electrical network
- Construction of complete water supply system
- Installation of black water displacement equipment
- Manufacturing and installation of automatic water circulation system (winter berthing)
- Manufacturing and installation of "Colonne" smart pedestals
- Manufacturing and installation of 'Conic 130' waterproof outdoor deck lights
- Automated outdoor lighting system, controlled from Marina Manager
- Port entrance lights
- Other navigation lights
- Manufacturing and installation of main power distribution and sub-distribution cabinets (stainless steel)
- Smart marina management system (Marina Manager, Marinero App)
- Administrator services
- First electrical safety compliance inspection
- Commissioning of complete electrical network









## 4.8. TVSK (sailing sport club)

Marina, Balatonalmádi, Lake Balaton

- Manufacturing of 'Balaton Size M' pedestals (exworks)
- Tamper-proofing based on custom requirements







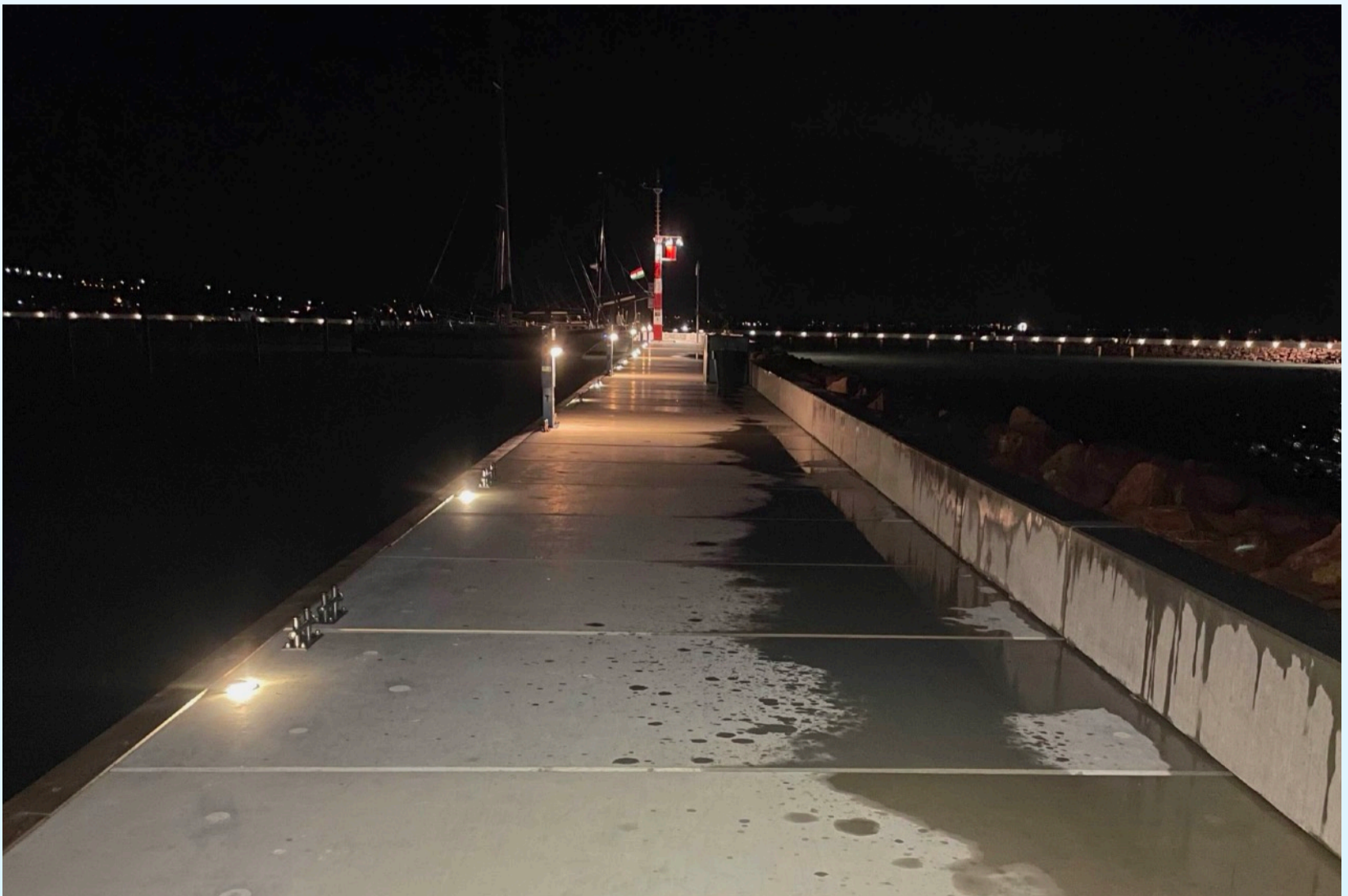
## 4.9. Aliga Port

Marina, Balatonvilágos, Lake Balaton

- Design of low voltage electrical networks
- Design of security camera system
- Design of wireless internet network
- Design of weak-current structured network
- Manufacturing and installation of automatic water circulation system (winter berthing)
- Manufacturing and installation of “Balaton M” smart pedestals
- Manufacturing and installation of ‘Conic 130’ waterproof outdoor deck lights
- Automated outdoor lighting system, controlled from Marina Manager
- Port entrance lights
- Other navigation lights
- Manufacturing and installation of main power distribution and sub-distribution cabinets (stainless steel)
- Smart marina management system (Marina Manager, Marinero App)
- First electrical safety compliance inspection
- Commissioning of complete electrical network







## 4.10. VVSI, Gárdony

Marina, Lake Velence, Hungary

- Manufacturing and installation of “Balaton M” smart pedestals
- First electrical safety compliance inspection
- Commissioning of complete electrical network

